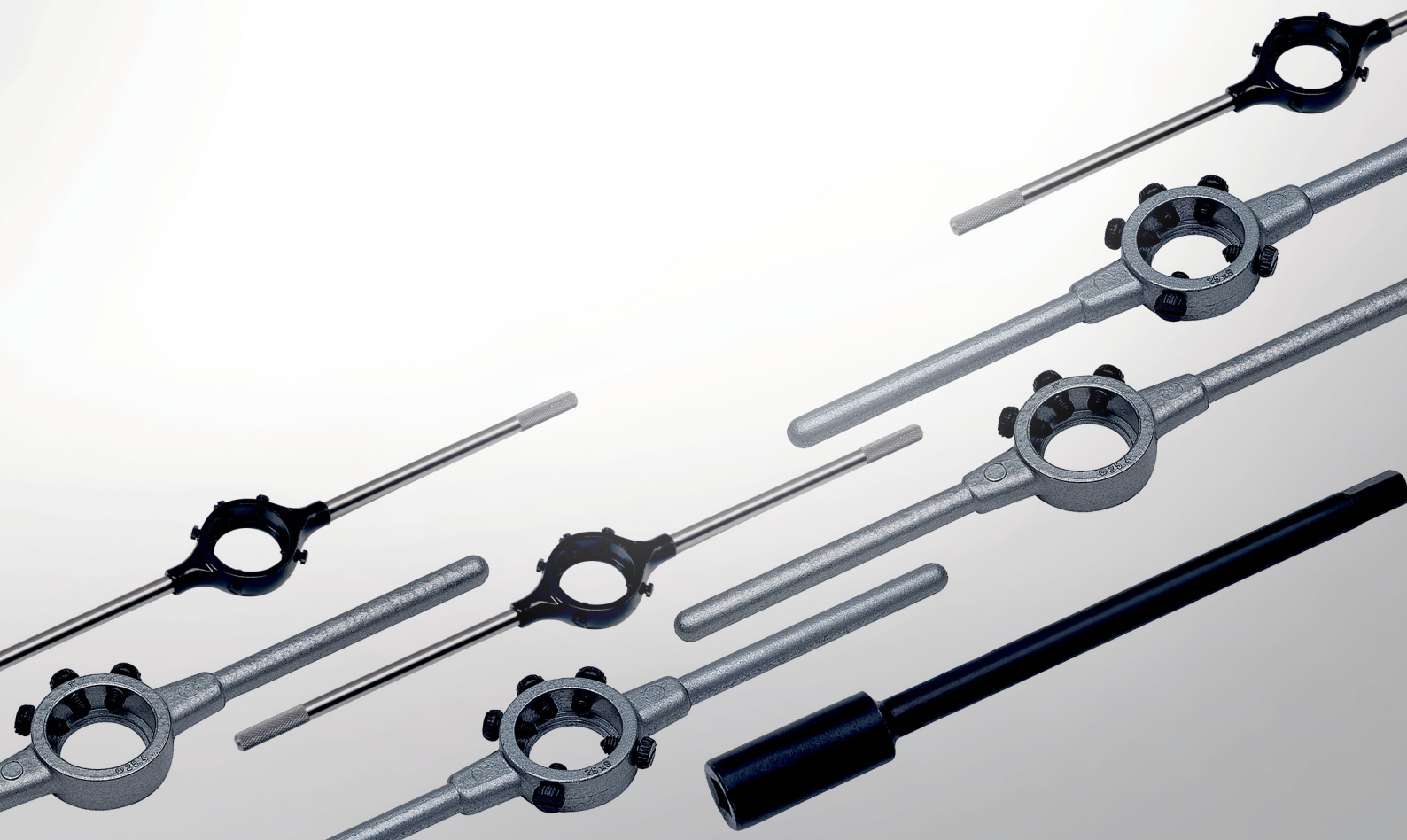


Threading tool holder





Threading tool holder



- › Tap holder with ratchet in short or long for taps up to M 12
- › Adjustable tap wrenches acc. to DIN 1814 made of zinc die cast or in steel pattern
- › Die stocks acc. to DIN 225 (DIN EN 22568) made of zinc die cast or in steel pattern
- › Tap extensions acc. to DIN 377 Square acc. DIN 10 from 2,1 mm up to 32 mm

Tap holder with ratchet

- › Tap holder with ratchet for right- and left-hand-turn
- › All steel quality in short or long pattern
- › Ratchet for hand taps and short machine taps up to M 12
- › Spare jaws and springs can be ordered seperately



Jaws and Springs for tap holder with ratchet for right-and left-hand-turn

Material: all steel quality

Size: Size No. 1 / 10 and Size No. 2 / 20



Tap holder with ratches, short + long for right-and left-hand-turn, all steel quality

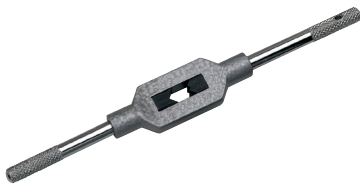
Variants (4):

Size	for Taps		Square mm	Length mm	Weight kg	Pkg. quantity	Art.-No.
1	M 3-10	1/8-3/8	2.4-5.5	85	0,165	10	10001
2	M 5-12	7/32-1/2	4.5-8.0	100	0,310	10	10002
10	M 3-10	1/8-3/8	2.4-5.5	250	0,250	10	10010
20	M 5-12	7/32-1/2	4.5-8.0	300	0,440	10	10020
Jaws and Spring for size 1 and 10						10	10091
Jaws and Spring for size 2 and 20						10	10092



Adjustable tap wrenches

- Adjustable tap wrenches acc. to DIN 1814
- Body made of zinc die cast or in steel pattern
- For hand taps and short machine taps up to M 64
- Tap wrench for taps with up to 40 mm square



Adjustable tap wrenches

DIN 1814, zinc die cast, hardened jaws

Variants (7):

Size	for Taps			Square mm	Length mm	Weight kg	Pkg. quantity	Art.-No.
0	M 1-8	1/16-1/4		2.0-5.0	130	0,050	5	13000
1	M 1-10	1/16-3/8	G 1/8	2.0-6.3	176	0,095	5	13010
1.1/2	M 1-12	1/16-1/2	G 1/8	2.1-8.0	176	0,120	5	13015
2	M 4-12	5/32-1/2	G 1/8	3.0-9.0	280	0,285	5	13020
3	M 5-20	7/32-3/4	G 1/8-1/2	4.9-12	380	0,660	1	13030
4	M 11-27	7/16-1"	G 1/4-3/4	5.5-16	505	1,500	1	13040
5 L	M 13-32	1/2-1.1/4	G 1/4-1"	7-20	700	1,800	1	13050



Adjustable tap wrenches, steel

DIN 1814, steel

Variants (10):

Size	for Taps			Square mm	Length mm	Weight kg	Pkg. quantity	Art.-No.
0	M 1-8	1/16-1/4		2.0-5.0	130	0,050	5	14000
1	M 1-10	1/16-3/8		2.0-6.3	176	0,100	5	14010
1.1/2	M 1-12	1/16-1/2	G 1/8	2.1-8.0	176	0,120	5	14015
2	M 4-12	5/32-1/2	G 1/8	3.0-9.0	280	0,285	5	14020
3	M 5-20	7/32-3/4	G 1/8-1/2	4.9-12	380	0,660	1	14030
4	M 11-27	7/16-1"	G 1/4-3/4	5.5-16	500	1,500	1	14040
5	M 13-32	1/2-1.1/4	G 1/4-1"	7-20	700	1,800	1	14050
6	M 18-42	3/4-1.1/2	G 1/2-1.1/4	11-24	1000	2,600	1	14060
7	M 27-52	1.1/8-2"	G 3/4-1.3/4	16-32	1250	4,500	1	14070
8	M 27-64	1.1/8"-3"	G 3/4-3"	16-40	1250	4,500	1	14080



Die stocks

- Die stocks acc. to DIN 225 (DIN EN 22568)
- Body made of zinc die cast or in steel pattern
- For round dies up to M 64 and G (BSP) 4"
- Die stocks for round dies up to 160 mm outer diameter



Die Stocks

DIN 225 (DIN EN 22568), steel

Variants (16):

Ø x mm	for round Dies DIN 223 (DIN EN 22568)		Length mm	Weight kg	Pkg. quantity	Art.-No.
45 x 18	M 16-20	BSW 5/8-13/16	450	0,650	1	15209
55 x 22	M 22-24	BSW 7/8-1"	560	0,900	1	15211
65 x 25	M 27-36	BSW 1.1/8-1.3/8	630	1,400	1	15213
75 x 20	Mf 38-42	G 1.1/8-1.1/4	800	2,250	1	15214
75 x 30	M 38-42	BSW 1.1/2-1.5/8	800	2,100	1	15215
90 x 22	Mf 45-52	G 1.3/8-1.5/8	900	3,200	1	15216
90 x 36	M 45-52	BSW 1.3/4-2"	900	3,000	1	15217
105 x 22	Mf 54-63	G 1.3/4-2"	975	3,500	1	15218
105 x 36	M 54-63	BSW 2.1/4"-2.1/2"	975	3,500	1	15219
120 x 22	Mf 64-71	G 2.1/4-2.3/4	956	3,170	1	15220
120 x 36	M 64-71	BSW 2.3/4"	956	3,910	1	15221
130 x 25		G 3"	966	3,505	1	15222
130 x 36			966	4,025	1	15223
140 x 22			976	3,620	1	15224
150 x 25		G 3.1/2"	986	3,950	1	15226
160 x 25		G 4"	996	4,115	1	15228



Die Stocks

zinc die cast, (inch), with 3 screws

Variants (10):

Ø	mm	inch/pollice	Length mm	Weight kg	Pkg. quantity	Art.-No.
13/16"	20.6 x 6.35	13/16 x 1/4	200	0,060	5	15520
1"	25.4 x 9.5	1" x 3/8	224	0,100	5	15525
1.5/16"	33.4 x 11.1	1.5/16 x 7/16	270	0,180	5	15533
1.1/2"	38.1 x 12.7	1.1/2 x 1/2	315	0,320	5	15538
2"	50.8 x 15.9	2" x 5/8	560	0,900	1	15550
2.1/4"	57.1 x 17.5	2.1/4 x 11/16	560	0,900	1	15557
2.1/2"	63.5 x 19.0	2.1/2 x 3/4	630	1,400	1	15563
3"	76.2 x 22.2	3" x 7/8	900	2,200	1	15576
3.1/2"	88.9 x 25.4	3.1/2" x 1"	900	3,300	1	15588
4"	101.6 x 25.4	4" x 1"	1000	3,600	1	15599



Die Stocks

DIN 225 (DIN EN 22568), zinc die cast

Variants (13):

Ø x mm	for round Dies DIN 223 (DIN EN 22568)		Length mm	Weight kg	Pkg. quantity	Art.-No.
16 x 5	M 1-2.6	BSW 1/16-3/32	160	0,050	5	15001
20 x 5	M 3-4	BSW 1/8-5/32	200	0,065	5	15002
20 x 7	M 4.5-6	BSW 3/16-1/4	200	0,065	5	15003
25 x 9	M 7-9	BSW 5/16	224	0,105	5	15004
30 x 11	M 10-11	BSW 3/8-7/16	280	0,190	5	15005
38 x 10	Mf 12-15	G 1/4	315	0,340	5	15006
38 x 14	M 12-14	BSW 1/2-9/16	315	0,340	5	15007
45 x 14	Mf 16-20	G 3/8-1/2	450	0,650	1	15008
45 x 18	M 16-20	BSW 5/8-13/16	450	0,650	1	15009
55 x 16	Mf 22-26	G 5/8-3/4	560	0,900	1	15010
55 x 22	M 22-24	BSW 7/8-1"	560	0,900	1	15011
65 x 18	Mf 27-36	G 7/8-1"	630	1,400	1	15012
65 x 25	M 27-36	BSW 1.1/8-1.3/8	630	1,400	1	15013



Tap extensions

- Tap extensions acc. to DIN 377
- Squares acc. to DIN 10
- Burnished extensions for taps up to M 52
- Square drive from 2,1 mm up to 32 mm



Tap Extensions

DIN 377, Squares according to DIN 10

Variants (26):

Square mm	L1	for DIN 352	Art.-No.
2.1	60	M 1-2.6	14521
2.4	70		14524
2.7	80	M 3	14527
3.0	90	M 3.5	14530
3.4	95	M 4	14534
3.8	100		14538
4.3	105		14543
4.9	110	M 4.5-8	14549
5.5	115	M 9-10	14555
6.2	120	M 11	14562
7.0	125	M 12	14570
8.0	125		14580
9.0	130	M 14-16	14590

Square mm	L1	for DIN 352	Art.-No.
10.0	140		14610
11.0	150	M 18	14611
12.0	150	M 20	14612
13.0	165		14613
14.5	175	M 22-24	14614
16.0	180	M 27	14616
18.0	200	M 30	14618
20.0	220	M 33	14620
22.0	220	M 36	14622
24.0	235	M 39-42	14624
26.0	250		14626
29.0	265	M 45-48	14629
32.0	285	M 52	14632